

584.98

563.50

550.23


547.000 (+5.250)

Target Shooter

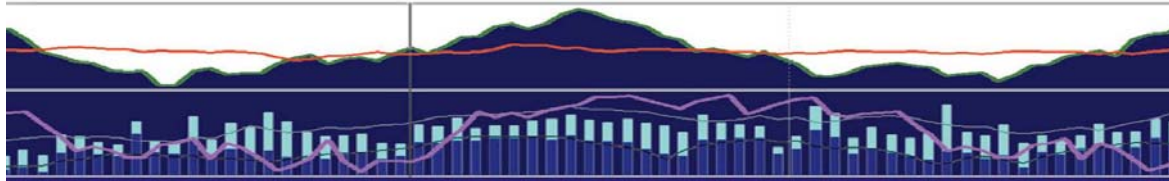
Trade Navigator

Thomas Stridsman's
Trading Systems
That Work Library

brought to you by...



Genesis
Financial Technologies Inc.



Finally Strategy Development and Back Testing Just Got Easier!

Introduction:

This library is a learning supplement for Thomas Stridsman's book *Trading Systems That Work* (ISBN 0-07-135980) and it is assumed that the customer will or has purchased the book along with this library. The book provides the reader an enlightening look at trading system measurement and design. Several Trade Navigator Indicators and Strategies are programmed for use as the reader progresses through the book. The author uses these trading strategies as learning examples only. As a result, the strategies are not intended to be applied to real time trading. The library contains a Symbol Group, which has 15 common market symbols that are used to test a strategy across a variety of markets as a test of robustness.

Library Name:

Thomas Stridsman Trading Systems That Work Library

Library Installation:

After purchasing the Library, use the Update Data tool (blue telephone icon) on the General Toolbar to download the library in to Trade Navigator.

Thomas Stridsman Templates:

Once the library is imported in to Trade Navigator the user will have access to the following Thomas Stridsman templates:

Thomas Stridsman Chap 5 Meander Indicators Template

Thomas Stridsman Chap 7 Moving Average Indicators Template

Thomas Stridsman Chap 7 Standard Deviation Breakout Template

Thomas Stridsman Chap 11 Gold Digger II Template

Thomas Stridsman Chicago Indicators Template – added bonus from Thomas Stridsman

To insert a study on a chart use the “Templates” drop down menu to select the desired template.

Thomas Stridsman Strategies:

Once the library is imported in to Trade Navigator the user will have access to the following Thomas Stridsman Strategies:

TS Chap 7 Moving Average Strategy

TS Chap 7 Standard Deviation Breakout Strategy

TS Chap 11 Gold Digger II Strategy

Thomas Stridsman Symbol Group:

Below is the preprogrammed Symbol Group symbol list. Symbols can be added or subtracted from the group. While testing a strategy, use the pull down menu under the Symbol column to select the "Thomas Stridsman – 15 Market Symbol Group". This will cause Trade Navigator to test a strategy across a group of 15 different markets instead of just one target market.

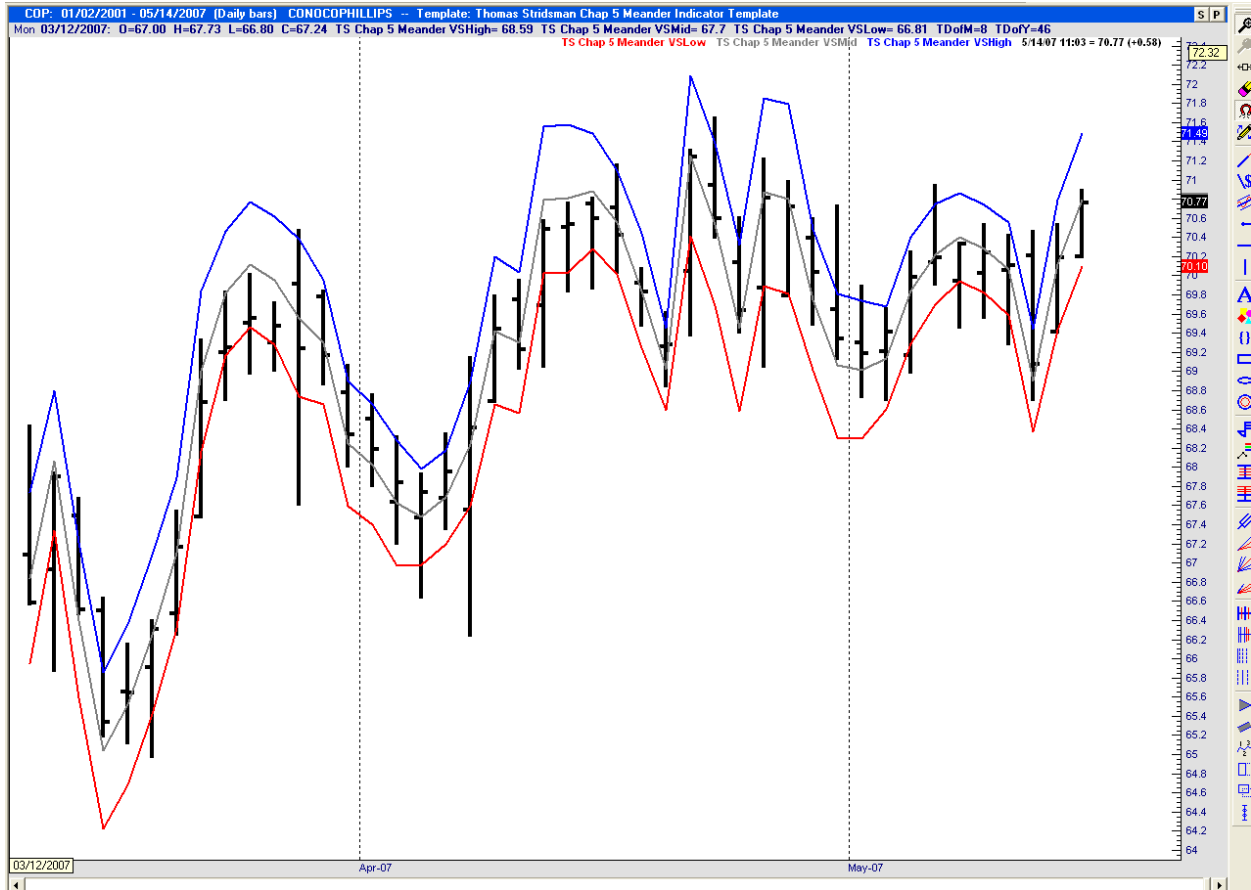
Symbol Group Name:

Thomas Stridsman - 15 Market Symbol Group

Description	Symbol
Crude Oil	CL2-067
Cotton	CT-067
US Dollar	DX-067
Gold	GC-067
Copper	HG-067
Coffee	KC-067
Lumber	LB-067
Live Cattle	LC2-067
Natural Gas	NG2-067
Nikkei 225	NK-067
Rough Rice	NR2-067
T-Bonds	TQ-067
Wheat	W2-067
Euro	WU-067
Japanese Yen	WY-067

Thomas Stridsman Chap 5 Meander Indicator Template Layout:

Below is a picture of how the Trade Navigator screen should look after installing the Thomas Stridsman Chap 5 Meander Indicator Template. This template coincides with material covered in Chapter 5 of the book and the software code located on page 64.



Thomas Stridsman Meander Indicators Description:

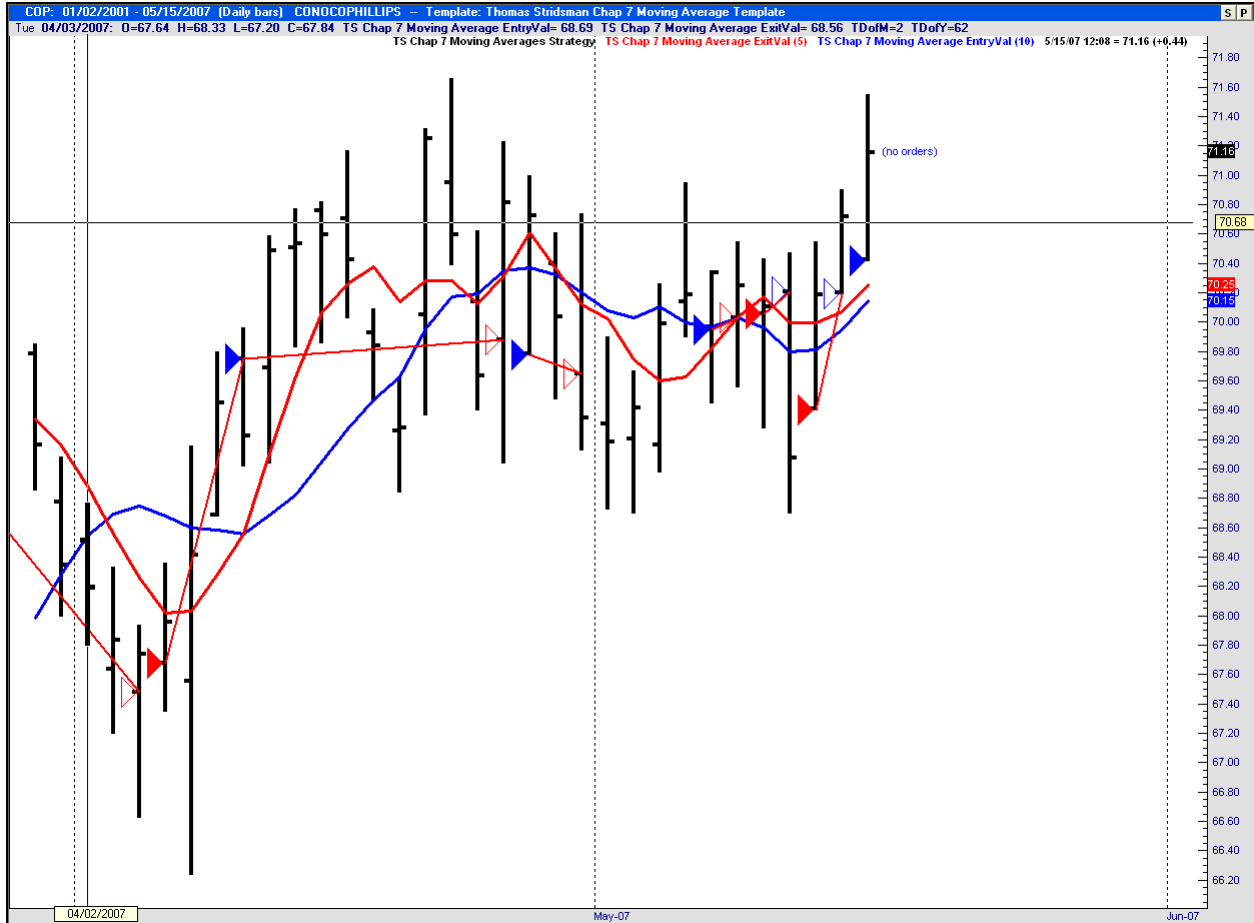
TS Chap 5 Meander VSHigh – Blue upper line that is 2 standard deviations above the VS Mid line.

TS Chap 5 Meander VSMid – Gray middle line

TS Chap 5 Meander VSLow - Red lower line that is 2 standard deviations below the VS Mid line.

Thomas Stridsman Chap 7 Moving Averages Template Layout:

Below is a picture of how the Trade Navigator screen should look after installing the Thomas Stridsman Chap 7 Moving Averages Template. This template coincides with material covered in Chapter 7 of the book and the software code located on page 88.



Thomas Stridsman Chap 7 Standard Deviation Breakout Template Layout:

Below is a picture of how the Trade Navigator screen should look after installing the Thomas Stridsman Chap 7 Standard Deviation Breakout Template. This template coincides with material covered in Chapter 7 of the book and the software code located on page 107 and 112.



Thomas Stridsman Standard Deviation Breakout Indicators Description:

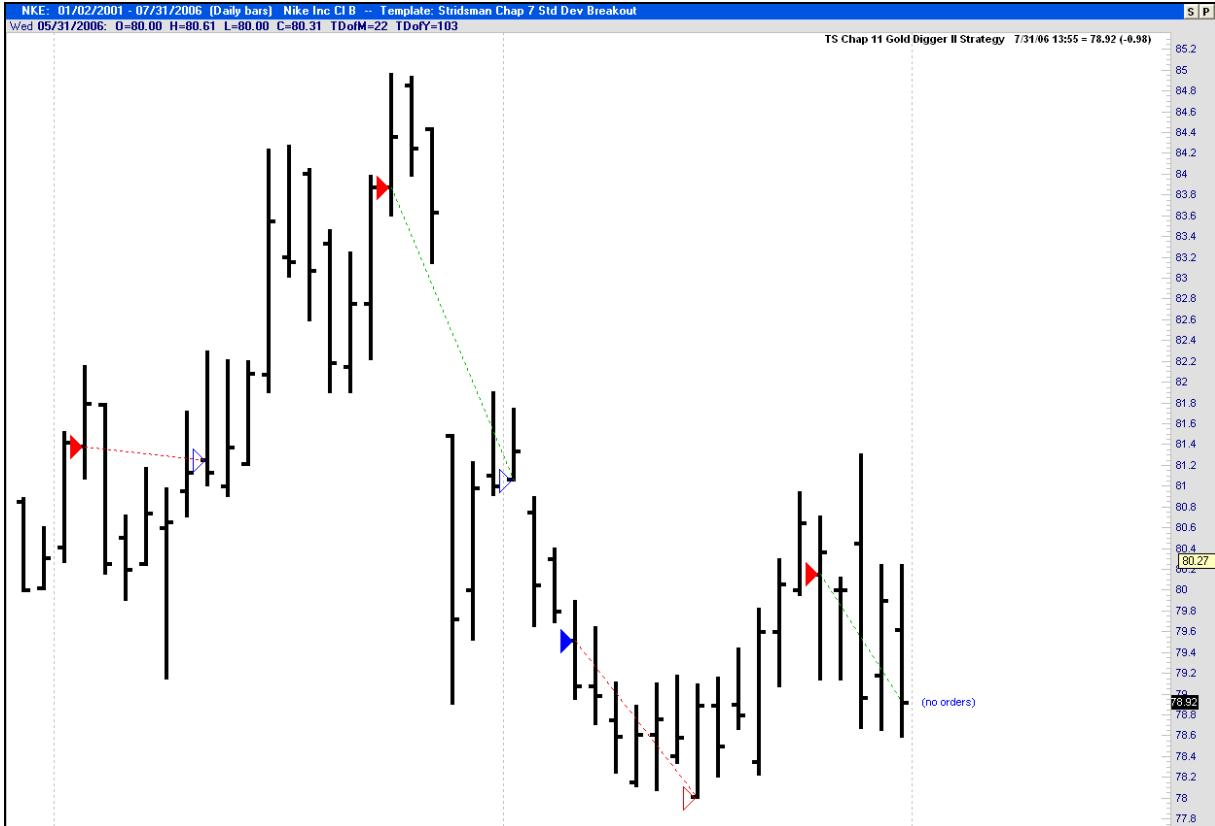
TS Chap 7 Standard Deviation Breakout UpBand - Blue upper line that is 2 standard deviations above the Midband line.

TS Chap 7 Standard Deviation Breakout MidBand – Gray middle line

TS Chap 7 Standard Deviation Breakout LoBand - Red lower line that is 2 standard deviations below the MidBand line.

Thomas Stridsman Chap 11 Gold Digger II Template Layout:

Below is a picture of how the Trade Navigator screen should look after installing the Thomas Stridsman Chap 11 Gold Digger II Template. This template coincides with material covered in Chapter 11 of the book and the software code located on page 191.



Appendix A

Thomas Stridsman Library – Templates, Strategies, Rules, Indicators, and Functions list

Templates:

Thomas Stridsman Chap 5 Meander Indicators Template
Thomas Stridsman Chap 7 Moving Average Indicators Template
Thomas Stridsman Chap 7 Standard Deviation Breakout Template
Thomas Stridsman Chap 11 Gold Digger II Template
Thomas Stridsman Chicago Indicators Template

Indicators: TS Chap 5 Meander Indicators – located in Chapter 5, Page 64

Indicators:

TS Chap 5 Meander VSHigh
TS Chap 5 Meander VSMid
TS Chap 5 Meander VSLow

Functions:

TS Chap 5 Meander AvgVS
TS Chap 5 Meander DiffVS
TS Chap 5 Meander stdVS

Strategy: TS Chap 7 Moving Average Strategy – located in Chapter 7, Page 88

Rules:

TS Chap 7 Moving Average Long Entry
TS Chap 7 Moving Average Long Exit
TS Chap 7 Moving Average Short Entry
TS Chap 7 Moving Average Short Exit

Functions:

TS Chap 7 Moving Average EntryVal
TS Chap 7 Moving Average ExitVal

Indicators: TS Chap 7 Standard Deviation Indicators I – located in Chapter 7, Page 107

Indicator:

TS Chap 7 Standard Deviation Breakout LoBand
TS Chap 7 Standard Deviation Breakout MidBand
TS Chap 7 Standard Deviation Breakout UpBand

Functions:

TS Chap 7 Standard Deviation Breakout BandDevi

Strategy: TS Chap 7 Standard Deviation Breakout Strategy – located in Chapter 7, Page 112

Rules:

TS Chap 7 Standard Deviation Breakout Long Entry
TS Chap 7 Standard Deviation Breakout Long Exit
TS Chap 7 Standard Deviation Breakout Short Entry
TS Chap 7 Standard Deviation Breakout Short Exit

Strategy: TS Chap 11 Gold Digger II Strategy – located in Chapter 11, Page 191

Rules:

TS Chap 11 Gold Digger II Long Entry

TS Chap 11 Gold Digger II Long Exit

TS Chap 11 Gold Digger II Short Entry

TS Chap 11 Gold Digger II Short Exit

Indicators: TS Chicago Indicators

Indicator:

TS AveDiffTypMove

TS BarMedian

TS BarVariation

TS ChicagoIndicator

TS CloseVariation

TS DiffTypMove

TS LineSignificance

TS Smoothie

TS StdDiffTypMove

TS Typical Bar

TS Typical Move

TS UnBiased Range

TS VolExtreme Lower

TS VolExtreme Upper